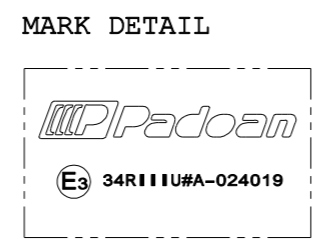


| Tank composition | | |
|------------------|-------------------------------------|------|
| Pos. | Denomination | Q.ty |
| 1 | OIL CAP FLANGE | 1 |
| 2 | RETURN FILTER FLANGE | 1 |
| 3 | FILLING CAP | 1 |
| 4 | LEVEL INDICATOR VDO TYPE CONNECTION | 1 |
| 5 | DIESEL DRAINAGE | 1 |
| 6 | OIL SUCTION CONNECTION 1" 1/2 | 1 |
| 7 | 1" LEVEL INDICATOR | 1 |
| 8 | OIL RETURN CONNECTION 1"1/4 | 1 |
| 9 | PARTITION | 3 |
| 10 | SEALED FUND | 1 |
| 11 | SUPPORT 63/70 | 3 |
| 12 | STRAP | 3 |
| 13 | GROUND CONNECTION | |
| 14 | OIL RETURN CONNECTION 1" | 1 |



| Tank dimension | |
|------------------------------|-----------------|
| Oil level indicator capacity | 160 Lt |
| Oil full capacity | 195 Lt |
| Diesel oil full capacity | 616 Lt |
| Support weight | 40.5 Kg |
| Tank weight (F,I,T) | kg (A) kg |
| Dimensions | 2000x636x706 mm |

| Rev. | Description | Data | Dis. | Ver. | App. |
|------|--|------------|------|------|------|
| 4 | NEW PRODUCTION SYSTEM | 11/05/2016 | FM | MM | EB |
| 3 | ADDED GROUND CONNECTION + CHANGED DISTANCE BETWEEN HOLES SUPPORT | 04/02/2014 | AF | MM | BM |
| 2 | NEW LEVEL INDICATOR POSITION | 07/12/2010 | MM | MM | BM |
| 1 | ADDED LEVEL INDICATOR ON SIDE | 16/07/2009 | MM | CGP | PF |
| 0 | EMISSION | 18/01/2008 | MM | CGP | PF |

| | | | |
|--------------|---|-------------|---|
| Part name : | Combined tank 0200 D600 Al/Steel/S.Steel fam. 636x706 | | |
| Part code : | NSM(X) 0600200C100 | Replace the | Material code |
| OUT OF SCALE | | Replaced by | (X)=F:Steel DC03A EN 10130 |
| | | | (X)=I:Stainless steel AISI 304 UNI EN 10088 |
| | | | (X)=T:Textured stainless steel. AISI 304 UNI EN 10088 |
| | | | (X)=A:Aluminium EN AW 5754 |

| |
|--|
| General tolerances: ISO 2768 V |
| Drawing format A3 |
| OWNERSHIP OF THIS DRAWING IS RESERVED BY LAW AND MAY NOT BE REPRODUCED IN WHOLE OR IN PART WITHOUT PERMISSION OF PADOAN S.R.L. |
| DO NOT MAKE MEASUREMENTS ON DRAWING DO NOT CHANGE WITHOUT TECHNICAL OFFICE AUTHORIZATION |